



Strengthening Family and Community Engagement for ESPs

January 25, 2024
7-8 pm ET

ESP Presenter Panel

KimEl' Henry (MN)
Martin Jenkins (AZ)
Judith Lea (AL)

**Moderated by Dan Brown,
NEA Sr. Program/Policy
Analyst*

Catherine Gilmore (FL)
Sherriann Johnson (FL)

**Moderated by Angelia
Ebner, NEA Sr.
Program/Policy Analyst*

NEA ESP
LEARNING NETWORK





How do we feel about family and community engagement at work?

Respond now to the two questions in this Microsoft Form.

Scan the QR code with your device, or follow the link in the chat/below.

<https://forms.office.com/r/kwsCMVB03b>

Family and Community Engagement ESP Learning Network Webinar 1/25/24



Strengthening Family and Community Engagement for ESPs

Discussion #1 ESP panelists:

Judith Lea (AL)

KimEl' Henry (MN)

Martin Jenkins (AZ)

Moderator: Dan Brown, NEA staff,
ESP Quality Department



Questions to Consider During the Discussions

- What am I hearing that I might be able to apply or share at my worksite?
- What do I want to know more about, when it comes to family and community engagement at work?
- What resources might be helpful to me or my colleagues across the country to do a better job with family and community engagement?

Strengthening Family and Community Engagement for ESPs

Discussion #2 panelists:

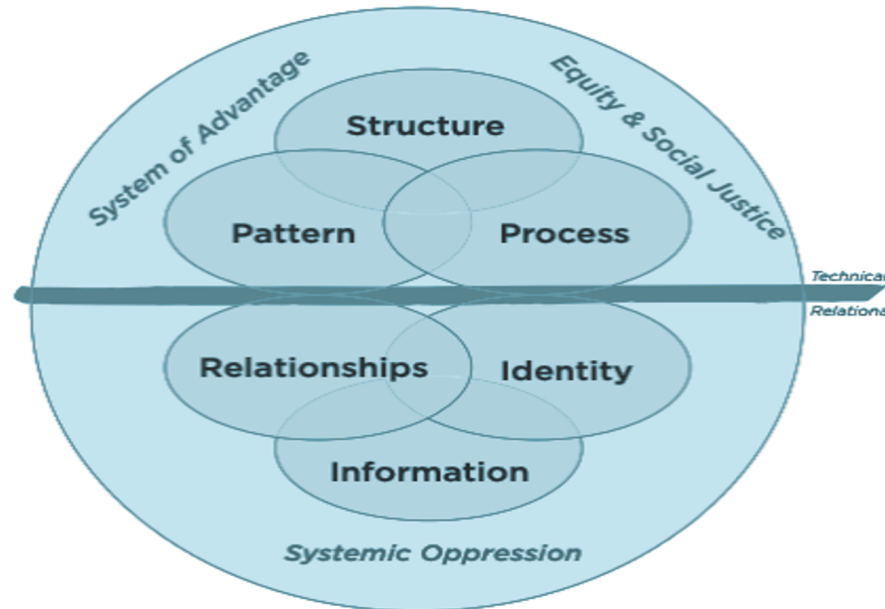
Sherriann Johnson, School Nurse (FL)
Catherine Gilmore, Community Schools Site
Coordinator (FL)

Moderator: Angelia Ebner, NEA staff,
Center for Professional Excellence

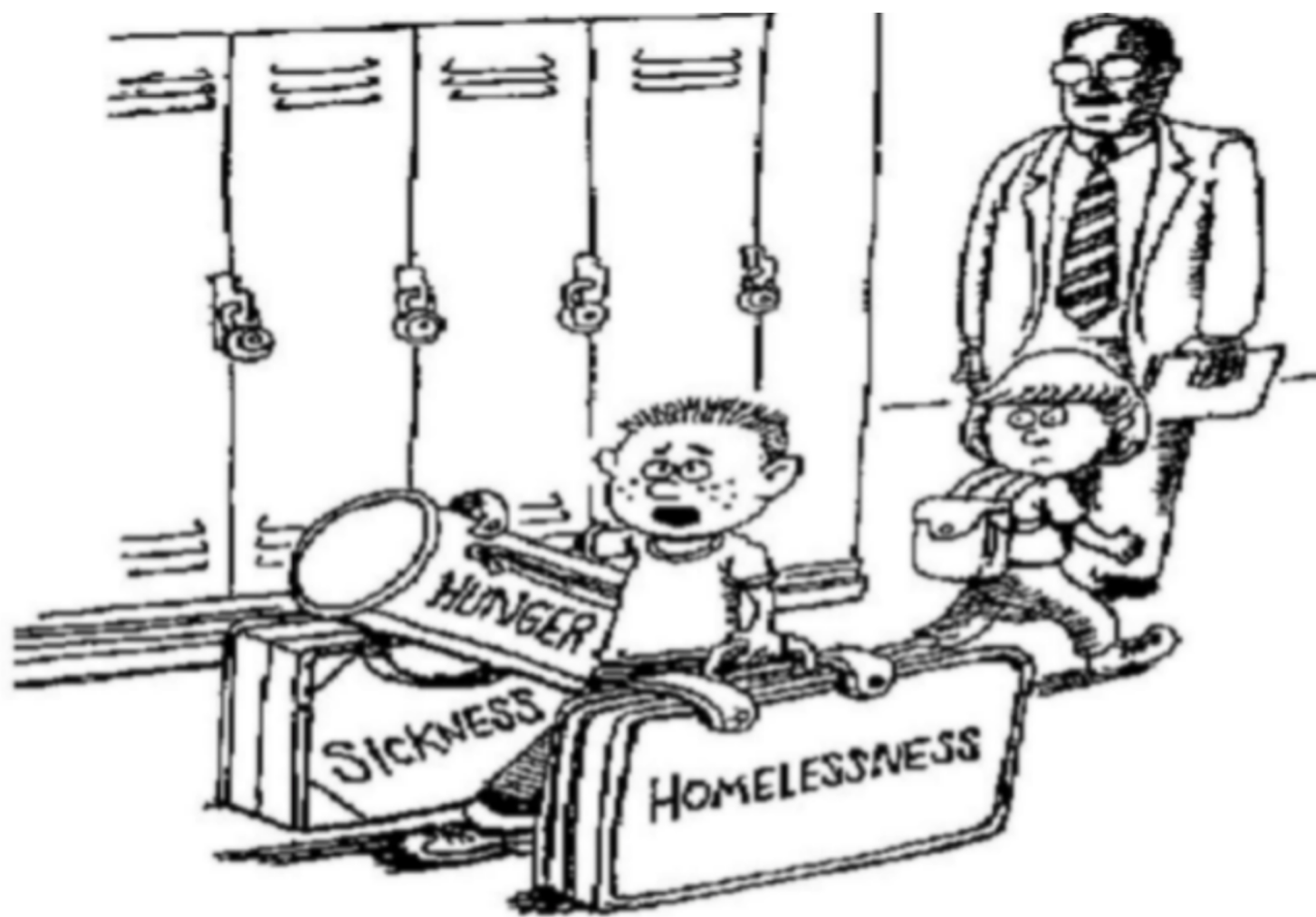


Community Schools, an Equity Strategy:

- Inclusive structures, patterns and processes for solving problems
- Share information and leadership
- Center authentic engagement with commonly underrepresented voices in school improvement
- Honor local identity
- Build relationships (shift from transactional to relational)



www.nationalequityproject.org



***“Could someone help me with these?
I’m late for math class.”***

Scott Spencer



Improvement for Transformation

“Every system is perfectly designed to get the results it gets.”

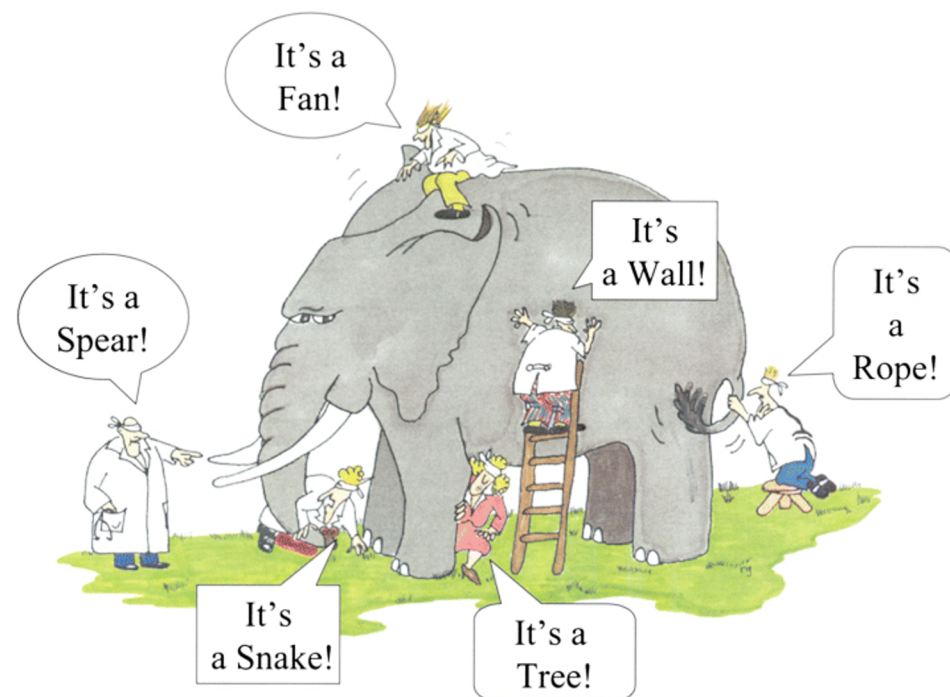
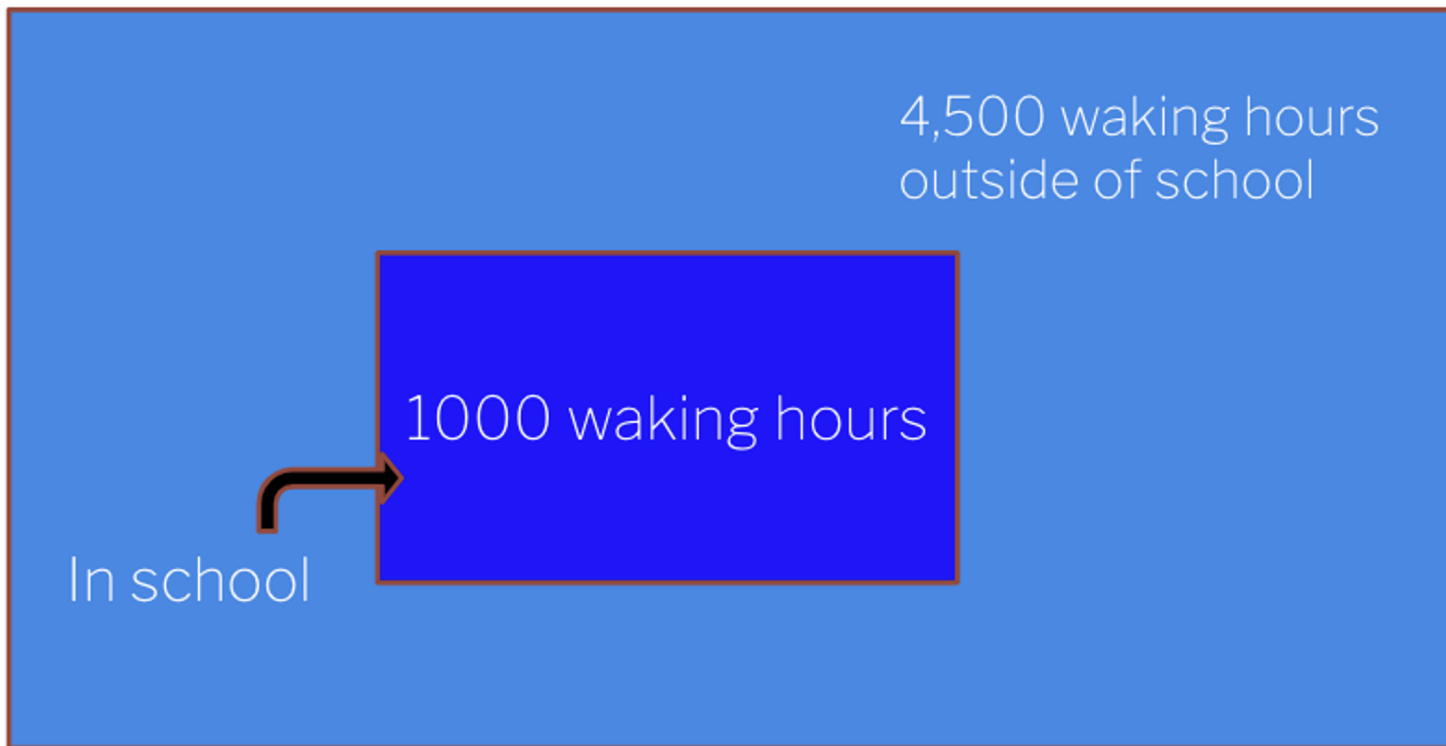
W. Edwards Deming

Community Schools **deeply understand the systems** that they are operating within, they develop a holistic vision for their schools and communities, and they problem solve changes to their system to achieve their vision.

Building/changing **school and community systems and culture** - *by, for, and with the people most affected, and most often left out of decision making.*

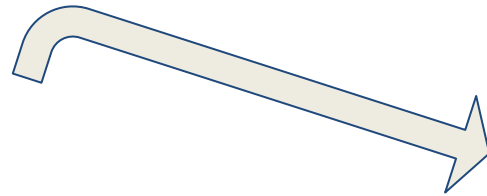
Not a band-aid...a disruption

Transformational: Aligning Inside and Out

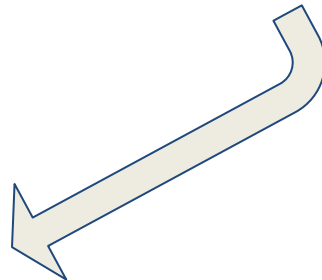


Transformation

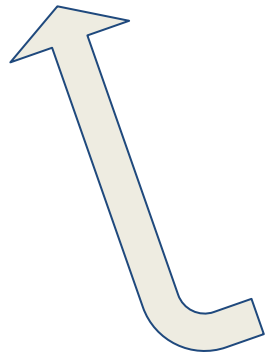
School level
transformation



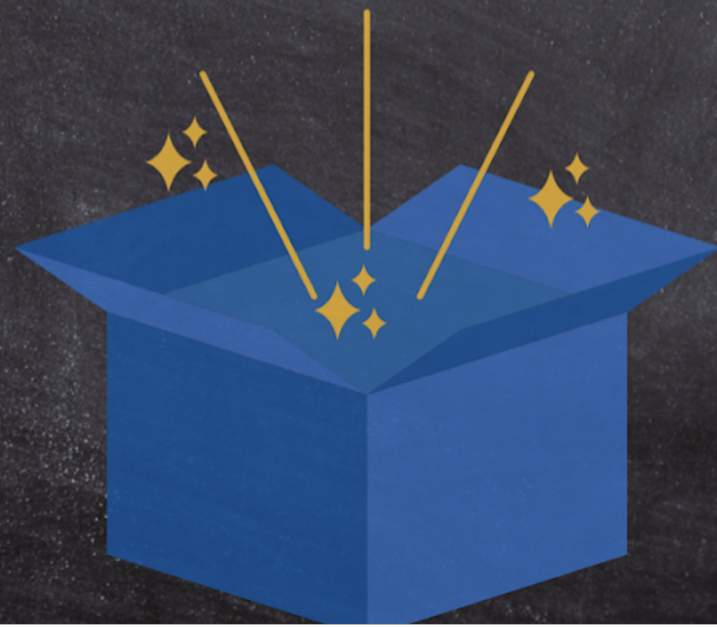
City/County, State &
Federal changes



District level
transformation



IMAGINE



Gibson Elementary School

A Community School

Hillsborough County Public Schools (FL)

- Sherriann Johnson
School Nurse
- Catherine Gilmore
Community School Resource Teacher
- Moderator: Angelia Ebner
NEA Staff, Center for Professional Excellence

